



## *Rack Smart Sinus Inverter* *R15i / 1500VA / 1000W*

- Pure Sine wave output
- Smart technology
- Real time and calendar
- Super charger (Adjustable battery charger)
- Wide input voltage operation range
- High quality device
- Long lifetime without reparation
- 3 year warranty



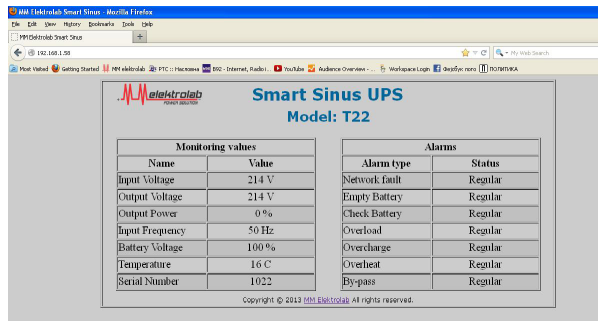
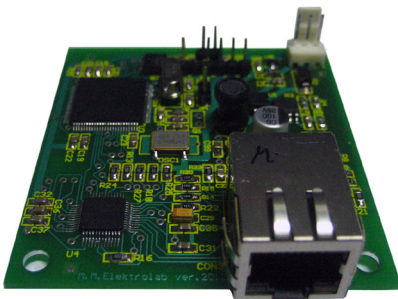
### Purpose



Industry, medical, server rooms...

## DESCRIPTION:

- Smart Sinus Ups is high quality device, generates a pure Sinusoidal voltage at the two output's 230V~ / 24V~ +/-5%. This ups model does not have an internal batteries, 2 x external (24V) is connected, battery capacity-option.
- Super-charger digital adjustable charger, min 9Ah to max 200Ah with IU characteristics and temperature compensation.
- Smart technology enables high reliability, fully automated and independent system.
- Long life -UPS life without repairs over 15 years (not applicable for batteries).
- Wide input voltage operation range (min 150V~ - max 290V~ without degrading power).
- Lots of quality protections.
- Saving event+log alarms in real time.
- Does not require an external power (rectifier).
- Relay signaling: Network failure / Alarm group
- LAN card with SNMP and HTTP protocols, which allows real-time monitoring of UPS devices anywhere in the country and abroad.

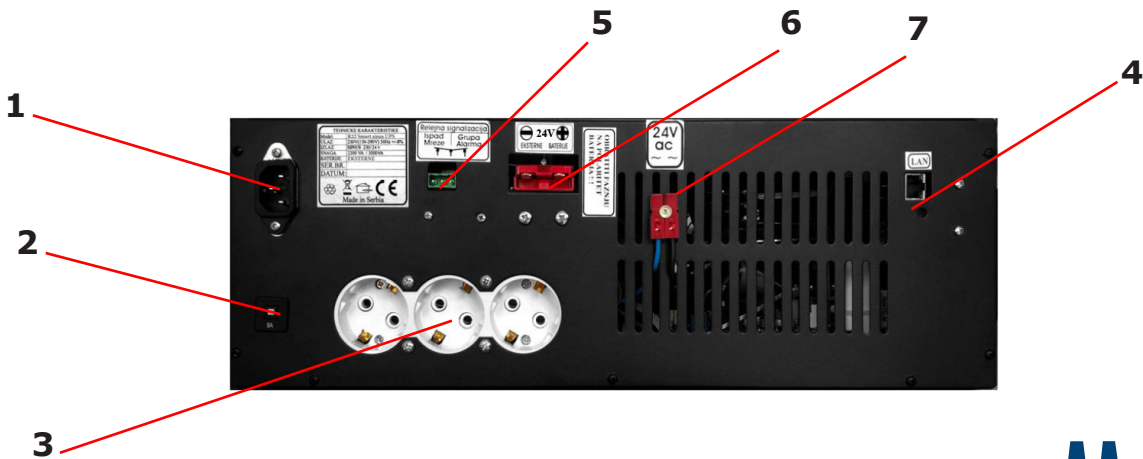


## TECHNICAL DATA:

<b>MODEL:</b>	<b>R15i</b>
Power:	1500 VA /1000 W
<b>INPUT:</b>	
Nominal Voltage:	230V (min 150V – max 290V without degrading power)
Frequency:	50Hz +/- 10 %
<b>OUTPUT:</b>	
Connection:	Schuko CEE7 x 3
Nominal Voltage:	230V / 24V~ (6A) +/- 5 %
Wave form:	Pure Sine wave
Frequency:	50Hz +/- 0,01%
Transfer time:	0 msec
By-pass:	NO
Efficiency:	92% (Load=100%)
Topology:	Double conversion
<b>PROTECTIONS:</b>	
Protections::	Short circuit at the output / Overload / Overcharge batteries / Deep batteries discharge / Overvoltage-Undervoltage on the UPS Input / Overvoltage-Undervoltage on the UPS Output / Overheating. -Printed circuit boards are protected from moisture
<b>INDICATOR:</b>	
Front panel:	Alfa-numeric display 4x20 character with back light, measurement: -Input/Output voltage, Input frequency, Batteries voltage (V), Charging / Discharging battery %,Output power (VA/%), Work time on batteries,Ups status, Log alarm, Event alarm, Real time-calendar, Charge current battery, Ambiental and Heatsink temperature. -Button On-Off , Parameter setting
<b>BATTERIES:</b>	
Battery number and model:	External 2 x 12V (24V) , battery capacity-option
Charger:	Digital adjustable, min 9Ah to max 200Ah with IU characteristics and temperature compensation.
Soft-start (batt.circuit):	Yes
Charging time:	6-8h
Autonomy:	Option
<b>COMMUNICATION:</b>	
Communication:	-Integrated LAN card + software -Relay signaling: Network failure / Alarm group

SAFETY STANDARDS:	
LVD conformity :	EN 60950
EMC conformity:	EN 62040-2:2006
DIMENSIONS:	
Height:	15 cm
Widht:	44 cm
Depth:	35 cm
GENERAL:	
Green power:	Yes, adjustable
Self test battery:	Yes (10-90days and 1-60min adjustable)
Voltage distortion:	<3%
Operating temperature range:	-20°C to +65°C
IP class:	IP 21
Safety mark:	CE
Weight:	20kg
WARRANTY:	
Warranty:	Ups 3 years

## REAR SIDE:



1. Power connector 220 VAC
2. Power fuse
3. Connection Schuko CEE7 x 3
4. LAN communication
5. Relay signaling
6. Connector for external batteries
7. Output 24 VAC

  
**elektrolab**  
 POWER SOLUTION  
[www.ups-napajanja.rs](http://www.ups-napajanja.rs)

Džona Kenedija 11  
 Belgrade - Kaluđerica  
 Serbia  
 +381 11 34 13 442  
[office@mmelektrolab.com](mailto:office@mmelektrolab.com)